



PRESTIGE & VILLAGE

UK's finest properties



CLEGG ROAD, SOUTHSEA, PO4 9DG

This property would make an ideal investment purchase and has the possibility of creating a 3rd Bedroom!

Alternatively it could be ideal for a buyer who is happy to do some upgrading and repair.

The accommodation currently comprises of 2 double bedrooms, Lounge with openway to kitchen, bathroom, downstairs cloakroom plus an integral garage (which could be converted into a 3rd bedroom).

Ideally located just off Highland Road, with Fratton train station within walking distance plus Albert Road with all its shopping, bar and restaurants, also a short stroll away.

The house has double glazing and gas central heating.

No forward chain!

ASKING PRICE £220,000

CLEGG ROAD

, SOUTHSEA, PO4 9DG



- Ideal Investment Purchase
- In need of some upgrading & repair
- 2 Double Bedrooms
- Integral Garage (Potential 3rd Bedroom)
- Bathroom & Downstairs Cloakroom
- Double Glazing
- Gas Central Heating
- No Forward Chain

Entrance

Double glazed front door leading to:-

Entrance Hall

Laminate wood flooring, stairs to upper floors, storage cupboard, door leading to integral garage, door to:-

Cloakroom

Wall mounted wash hand basin, radiator, low level W.C.

Integral Garage

14'5" x 7'8" (4.4 x 2.35)

Up and over door.

First floor Landing

Stairs to second floor, door to:-

Living Room

14'9" x 8'10" (4.50m x 2.69m)

Double glazed bay window to front, further double glazed window to front, wood flooring, radiator. openway to:-

Kitchen

7'7" x 7'6" (2.32 x 2.30)

Range of fitted wall and base units with work surfaces over, inset single drainer sink unit, inset 4 burner gas hob with electric oven below, space and plumbing for washing machine.

Second Floor Landing

Built in airing cupboard with shelving, doors to:-

Bedroom 2

14'9" into wardrobe x 8'9" (4.50 into wardrobe x 2.69)

Double glazed window to front, built in wardrobes to one wall, radiator.

Bathroom

7'7 x 6'5 (2.31m x 1.96m)

Tiled floor, tiling to walls, radiator, extractor fan, white bathroom suite comprising panelled bath with shower above, pedestal hand basin and low level W.C.

Top Floor Landing

Door to:-

Bedroom 1

14'9" x 11'9" (4.50 x 3.6)

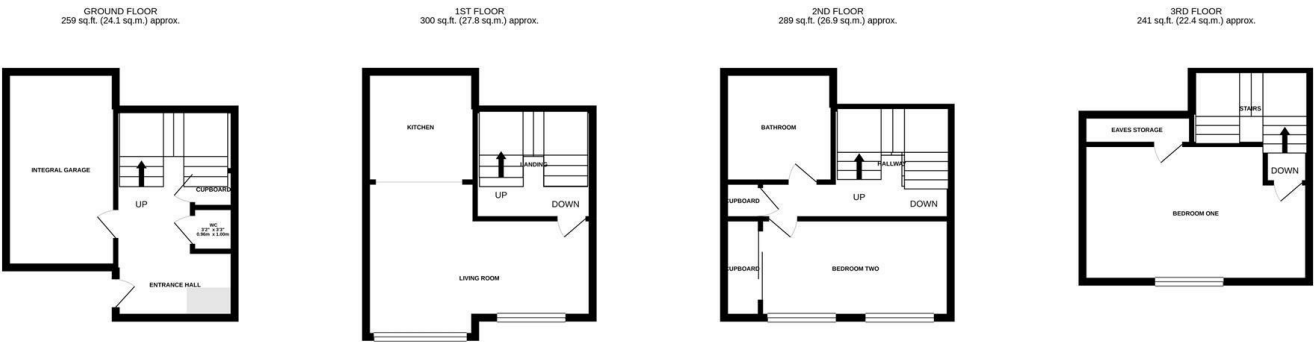
Double glazed window to front, built in cupboard, radiator.



Directions



FLOOR PLAN



TOTAL FLOOR AREA : 1089 sq.ft. (101.2 sq.m.) approx.

Whilst every attempt has been made to ensure the accuracy of the floorplan contained here, measurements of doors, windows, rooms and any other items are approximate and no responsibility is taken for any error, omission or mis-statement. This plan is for illustrative purposes only and should be used as such by any prospective purchaser. The services, systems and appliances shown have not been tested and no guarantee as to their operability or efficiency can be given.

Made with Metropix ©2021.

These particulars, whilst believed to be accurate are set out as a general outline only for guidance and do not constitute any part of an offer or contract. Intending purchasers should not rely on them as statements of representation of fact, but must satisfy themselves by inspection or otherwise as to their accuracy. No person in this firms employment has the authority to make or give any representation or warranty in respect of the property.

